

Our y2 curriculum

LANDKEY PRIMARY ACADEMY



Science History Geography Art DT Computing Music PE PSHE RE MFL

AUTUMN



Habitats



Which capital city would I like to visit in the UK?



Outdoor art



Networks



Charanga



Multiskills



Being me



Christianity



Name and greetings



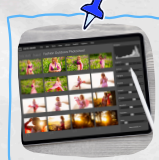
Materials



How has Landkey changed?



Sewing



Digital photography



Netball



Celebrating differences



Days of the week

SPRING



Animals inc. humans



How is China different from the UK?



Paint



Algorithms



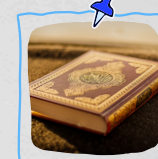
Charanga



Gymnastics



Dreams and goals



Judaism



Colours



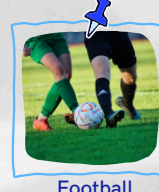
How did London change following the Great Fire of London?



Food



Pictograms



Football



Healthy me

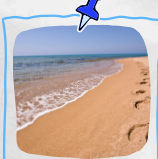


Numbers

SUMMER



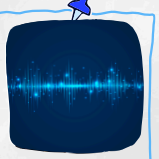
Plants



Why do we love being besides the seaside so much?



Clay



Digital music



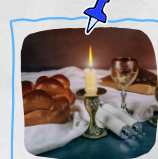
Charanga



Athletics



Relationships



Multiple faiths



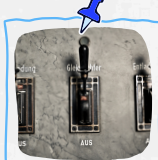
Weather



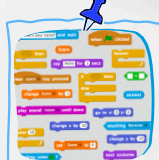
Science Week



How do your toys compare to toys from the past?



Lever



Programming



Tennis



Changing me



Feelings

KEY DATES

2024

Non Pupil Days 3rd & 4th Sept
First day 5th September
Half Term 28th –1st Nov
Non Pupil Day 4th Nov
Last Day 20th Dec

2025

Non Pupil Day 6th Jan
Term Starts 7th Jan
Half Term 17th– 21st Feb
Non Pupil Day 24th Feb
Last Day 4th April

Term Starts 22nd April
May Day Bank Holiday 5th
May

KS2 SATS 12-15th May
Half Term 26th May – 30th
May

Non Pupil Day 14th July
Last Day 23rd July

HOME LEARNING

Home learning needs to be completed weekly.

Reading

3x weekly minimum

Spelling

Given out on a **Friday**.
Tested the following
Friday.

DAILY

All children need to bring in a water bottle and snack every day.

PE will be **THURSDAY**.
Children need to wear a plain white/blue top and black shorts.
No other kit please.

Children need to ensure they have full school uniform including plain black shoes or trainers.

We will endeavour to keep all dates as scheduled, but please note there may be changes if necessary, i.e. if events rely upon good weather. We will alert you to this as early as possible if any alterations are required.